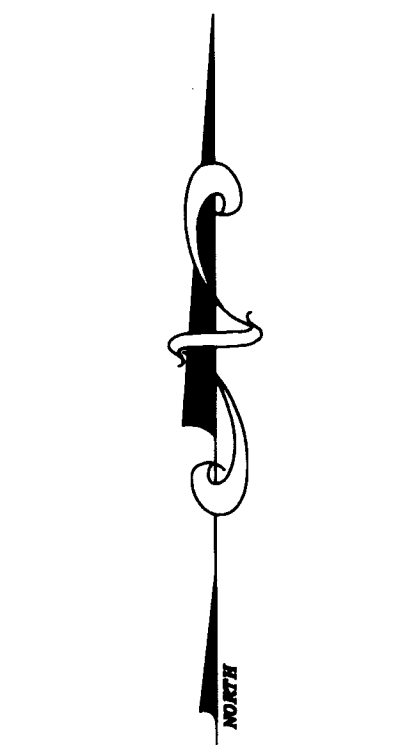


SHEET INDEX NOT TO SCALE

THIS INSTRUMENT PREPARED BY  
 DAVID P. LINDLEY  
 OF  
**CAULFIELD and WHEELER, INC.**  
 SURVEYORS - ENGINEERS - PLANNERS  
 7900 GLADES ROAD, SUITE 100  
 BOCA RATON, FLORIDA 33434 - (561)392-1991  
 CERTIFICATE OF AUTHORIZATION NO. LB3591



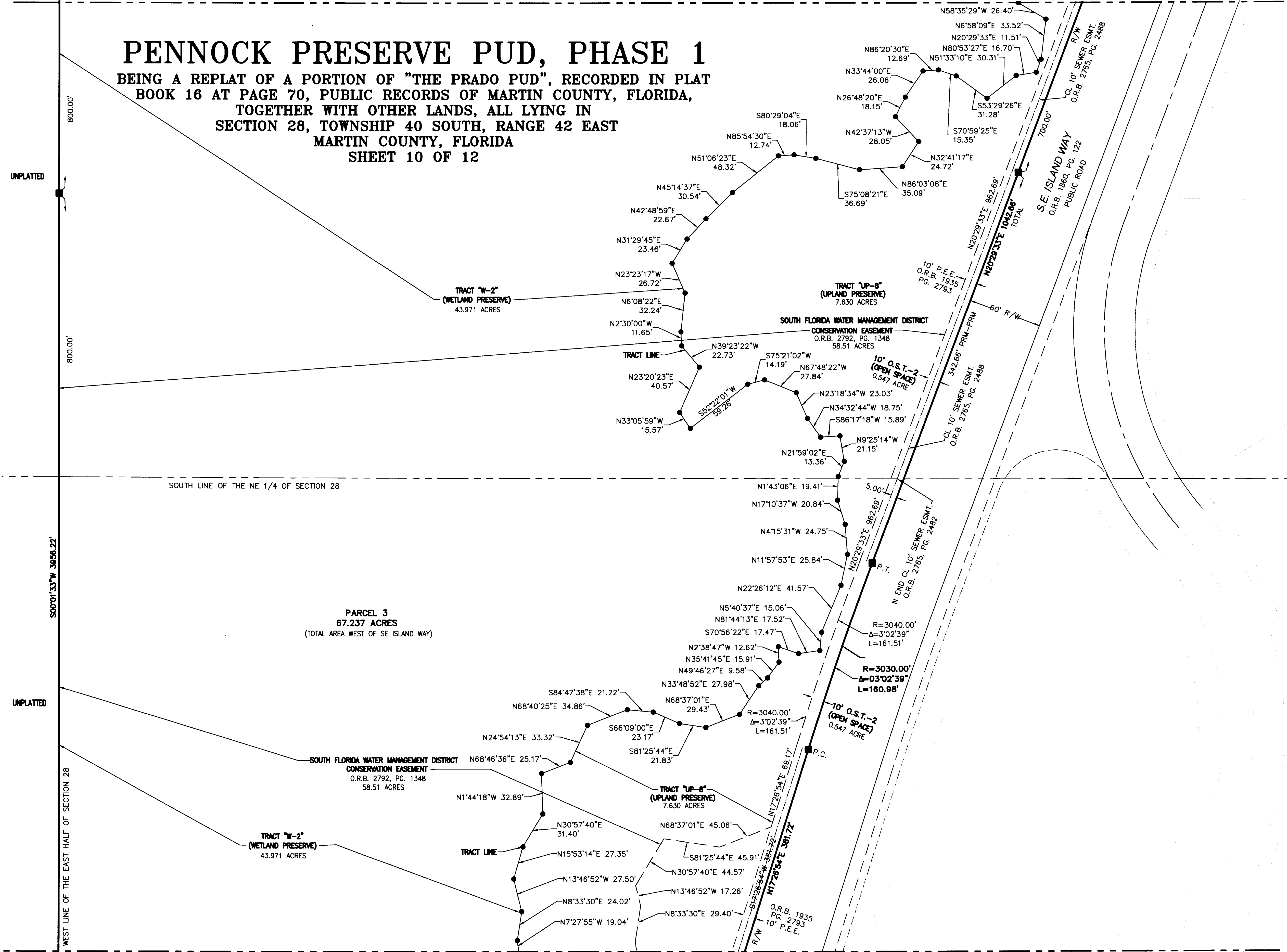
GRAPHIC SCALE  
 0 20 40 80  
 SCALE: 1" = 40'

- LEGEND:**
- AC. = ACRE
  - BB = BASIS OF BEARINGS
  - (C) = CALCULATED DATA
  - CL = CENTERLINE
  - CB = CHORD BEARING
  - CD = CHORD DISTANCE
  - Δ = DELTA ANGLE
  - (D) = DEED INFORMATION
  - D.E. = DRAINAGE EASEMENT
  - ESMT. = EASEMENT
  - FND. = FOUND
  - I.E.E. = INGRESS EGRESS EASEMENT
  - IRC = IRON ROD AND CAP
  - L = ARC LENGTH
  - L.B. = LICENSED BUSINESS
  - L.M.E. = LAKE MAINTENANCE EASEMENT
  - (M) = MEASURED DATA
  - (NR) = NON RADIAL LINE
  - N.T.S. = NOT TO SCALE
  - O.S.B. = OFFICIAL RECORDS BOOK
  - O.S.T. = OPEN SPACE TRACT
  - P.O.B. = POINT OF BEGINNING
  - P.O.C. = POINT OF COMMENCEMENT
  - P. = PLAT BOOK
  - (P) = PLAT DATA
  - P.C. = POINT OF CURVATURE
  - PG. = PAGE
  - P.C.C. = POINT OF COMPOUND CURVATURE
  - P.R.C. = POINT OF REVERSE CURVATURE
  - PRM = PERMANENT REFERENCE MONUMENT
  - PCP = PERMANENT CONTROL POINT
  - P.T. = POINT OF TANGENCY
  - P.E.E. = PERMANENT EMBANKMENT EASEMENT
  - R = RADIUS
  - R/W = RIGHT-OF-WAY
  - (R) = RADIAL LINE
  - SEC. = SECTION
  - U.E. = UTILITY EASEMENT
  - 1/4" = 1/4 SECTION CORNER
  - = SECTION CORNER
  - = FOUND CONC. MON. PRM L.B. 7344 (AS NOTED)
  - = FOUND IRC PRM L.B. 4286 (AS NOTED)
  - = SET CONC. MON. PRM L.B. 3591
  - = 5/8" IR/C, LB 3591
  - = PCP, NAIL/DISK, LB 3591

**PENNOCK PRESERVE PUD, PHASE 1**  
 BEING A REPLAT OF A PORTION OF "THE PRADO PUD", RECORDED IN PLAT  
 BOOK 16 AT PAGE 70, PUBLIC RECORDS OF MARTIN COUNTY, FLORIDA,  
 TOGETHER WITH OTHER LANDS, ALL LYING IN  
 SECTION 28, TOWNSHIP 40 SOUTH, RANGE 42 EAST  
 MARTIN COUNTY, FLORIDA  
 SHEET 10 OF 12

MATCHLINE SEE SHEET 9 OF 12

MATCHLINE SEE SHEET 11 OF 12



UNPLATTED

UNPLATTED

WEST LINE OF THE EAST HALF OF SECTION 28  
S00°01'33\"/>

SOUTH LINE OF THE NE 1/4 OF SECTION 28